

Milesburg Borough Newsletter

2021

Website: www.milesburgboro.com

Borough Council Members

- Council President
Fred Kellerman
814-441-7270
 - Council Vice President
Plummer Davidson
814-355-8459
 - Council
Sandy Dieterle
814-353-8886
Ethel Kellerman
814-441-6980
Greg Ritter
814-470-3105
George Holt
814-353-4657
Paul Bartley
814-355-2764
- Mayor Brandon Schadle
814-470-8512
- Manager/Sec.-Treasurer
Paula Hall
814-355-3583
- Tax Collector Sharon Yangula
814-355-3256

Borough Council Meeting dates are 6/14, 7/12, 8/9, 9/13, 10/11, 11/8 & 12/13 @ 6:30 PM at 416 Front Street (Milesburg Boro Bldg.)

BEMS - Call 814-355-2907 or contact the borough office for the annual membership information.

Where can I vote in Milesburg?

Milesburg Borough has one polling place which is located at the Milesburg Community Center, 101 Mill Street.

Election Day – May 18

Who do I contact about animal abuse in the neighborhood?

Contact either the State Dog Law Office or the State Dog Catcher at 814-542-8768.

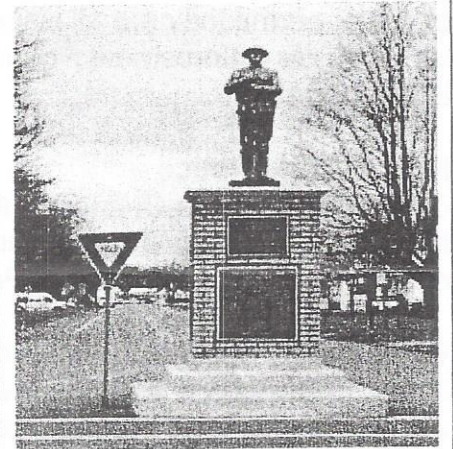
When walking your dog in Milesburg Borough, it must be on a leash as per the State Dog Law. Please clean up (feces) after your pet, if you see an individual not cleaning up after their pet, call Keith Rupert @ 814-933-8097

CH&L Fire Co.

May 29 – July 31 – Sept 25
Chicken BBQ @ CH&L Fire Hall,
300 Catherine St.
11:00 am until sold out

June 26 – Corn Hole Tournament
@ Fire Hall 1:00 – 5:00 pm

Oct 30 – Gun Drawing @ Fire Hall
Doors open at noon.



PARK –

At the regular monthly council meeting on April 12, a majority of council voted to not open the park. After discussion it was decided we would need additional information from our insurance company. Council was being cautious because they did not want to risk our insurance coverage and rates. Further information was requested and received from the vice president of our insurance company. After consulting with our attorney, it was decided to hold a special meeting to vote on opening the park. The park opened May 1st for the public to enjoy.

Please contact Milesburg Borough to reserve a pavilion at the park 814-355-3583.

All dates are subject to change, for the most current information always check the website:
www.milesburgboro.com

Yard Sale Dates –

May 14 & 15 / October 1 & 2
8:00 am to ? Please clean-up afterwards.

Community Center Rental:

Contact Dave Bagley at 814-355-8930 rent the Community or for questions.

Permits –

If you need a building, zoning, driveway paving, or rental permit, they are all issued by Penns Valley Code Enforcement Agency at 814-349-8177.

Rental Code Notice –

Under Rental Code Ordinance #358, any rental for human habitation for any duration requires obtaining a rental permit from Penns Valley Code

Food Bank – Held at the Milesburg Presbyterian Church. Donations or funds are always accepted. The food bank is open the 1st Tuesday of every month from 1:00-3:00 p.m.

Park Rentals –

Call the Borough Office 814-355-3583. Renting guarantees you a pavilion water and electricity.

Milesburg Museum

**Car & Truck Show/Community Day
September 25, 2021**

Partnership with Veterans, Milesburg Food Pantry, Milesburg Food & Sneaker Bank, The Crooked House, Milesburg Churches, Local Fire Companies, Area Businesses & Community.

We welcome community support (any amount). Your name will appear on the support posters on the day of the event.

Mail in donations may be sent to Milesburg Museum, P.O. Box 826, Milesburg, PA 16853.

Please check their website at www.milesburgmuseum.weebly.com

Lion's Club

Bingo @ Milesburg Community Center
Thursday @ 6:45 PM
For application to join Milesburg Lion's Club visit their website.

Code Enforcement Officer

Keith Rupert
814-933-8097

Ordinance #348 – Not permitted at anytime, no placing grass clippings, leaves, construction material, demolition material or other objects onto any street or alley of Milesburg Borough.

Brush collection will be the last Monday of the month. Please have all brush at the curb facing in the same direction with tree limbs no larger than 5 inches in diameter. **Remove other refuse and animal waste from brush piles.** This service can only be provided to the residents of Milesburg Borough. If you live in one of the adjacent municipalities, contact your municipal office to ask about their brush and leaf collection program.

Burning Ordinance – No burning of garbage, brush or leaves within the borough. Only friendship fires are allowed.

Ordinance #301 - Trash can are not to be placed on or along sidewalk, curb, public street, alley, right-of-way or private property no earlier than 6:00 pm on the day before the day of collection. Once collection has been made, trash, refuse, recycle containers must be removed by 12:00 noon on the day after collection.

Nuisance Ordinance #360 – Prohibit

1. Accumulation of refuse, debris, garbage and rubbish.
2. Junk vehicles, mowers, tractors, trailers, motor homes vehicle parts.
3. Storage of scrap, recyclables and etc.
4. Grass, weeds, vegetation over 6 inches.
5. Trees & vegetation encroaching upon public thoroughfare.
6. Conditions attracting rats and vermin.
7. Barking dogs.

The Ordinance can be viewed in its entirety by visiting the website.

Ordinances #356 – All cats are to be kept on their own property, no running at large.

Complaint forms are available either at the borough office or on the website.

Centre County Recycling & Refuse Authority

Recycling bins are located between the borough building and railroad tracks on Front Street, behind salt shed.
